

Cell Line Name: LA-N-6

Disease: Neuroblastoma

Phase of Therapy: Post-diagnosis

Disease Stage:

Source:

History:

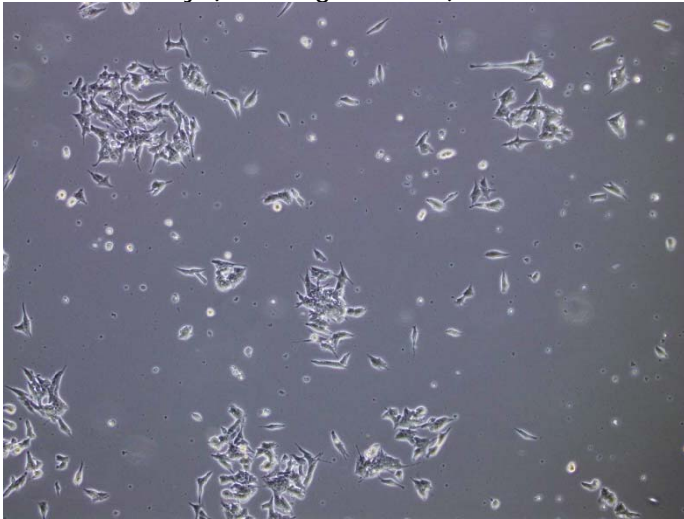
MYCN Status: Non-Amplified

STR Profile: Can be obtained at <http://strdb.cogcell.com>

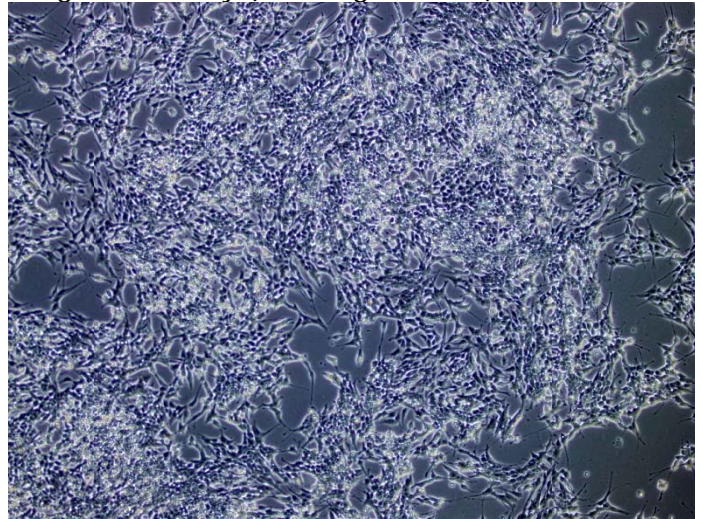
Media Formulation: Cells are grown in a base medium of RPMI-1640 plus the following supplements (to a final concentration): 10% Fetal Bovine Serum, 2mM L-Glutamine.

Growth Conditions: 5% CO₂, 20% O₂, 37.0°C.

Low confluency (10x magnification)



High confluency (10x magnification)



Low confluency (20x magnification)



High confluency (20x magnification)

